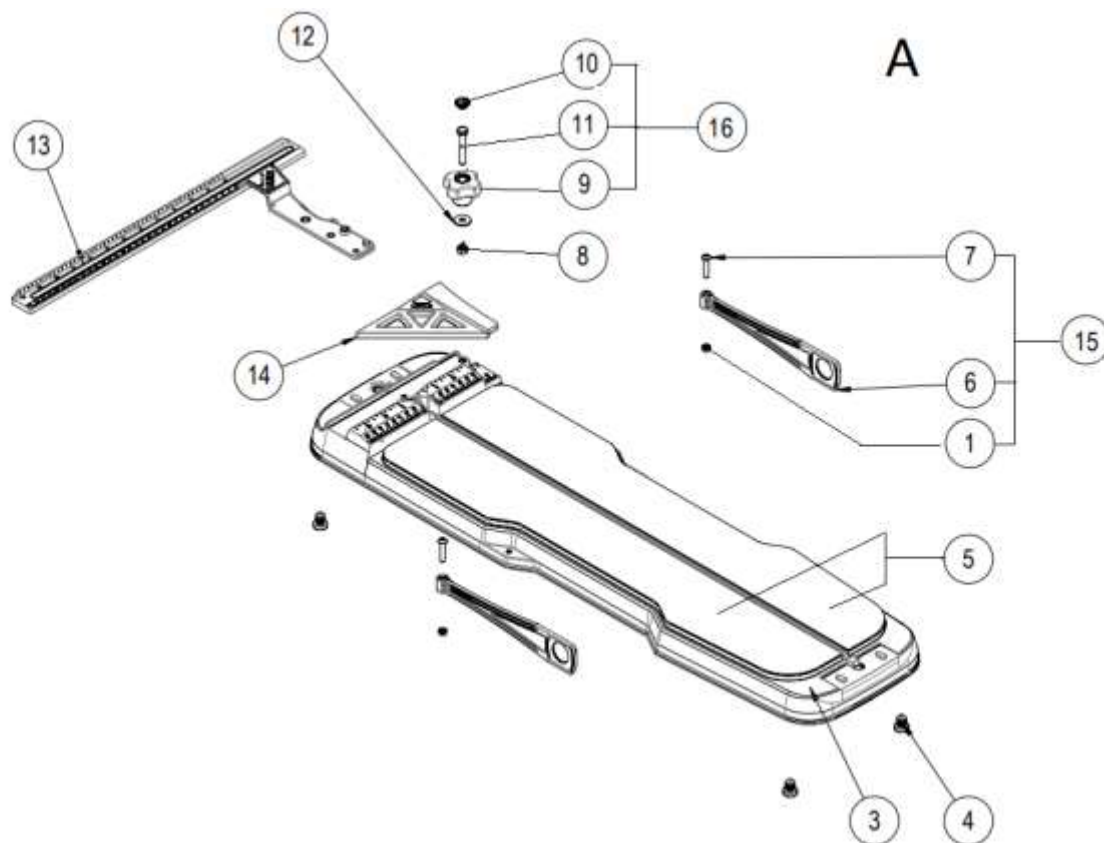


| Part-list | ES | EN | Prod. |
|-----------|----|-------------------------|------------------|
| 1 | A | GRUPO BASE | BASE GROUP |
| 2 | B | GRUPO GUIAS | GUIDE GROUP |
| 3 | C | GRUPO PORTAHERRAMIENTAS | TOOLHOLDER GROUP |

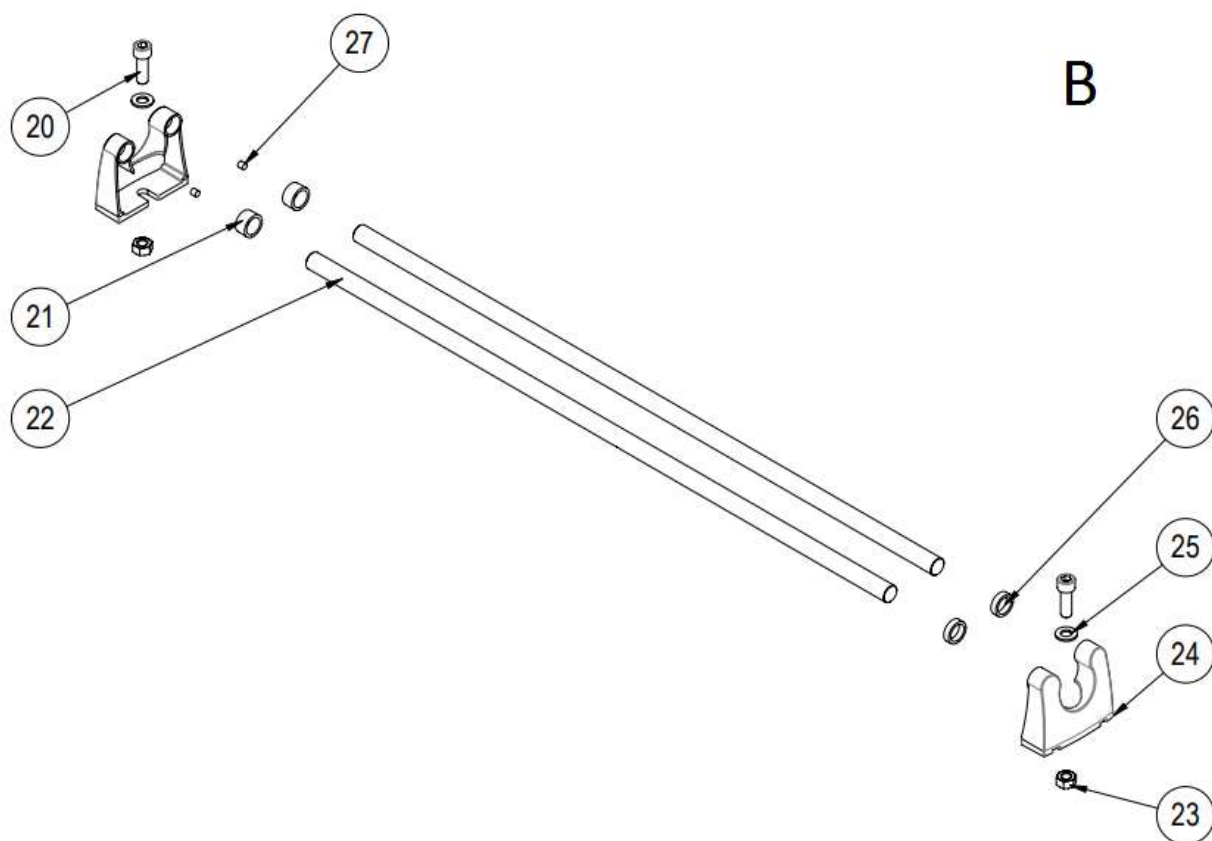
| Prod. | ES | EN | From serial num. |
|-------|---------------------------------|-----------------|------------------|
| 13960 | SPEED-62 CANADA-CORTADOR MANUAL | SPEED-62 CANADA | SD046789 |

Queda reservado el derecho de introducir cualquier modificacion técnica sin previo aviso

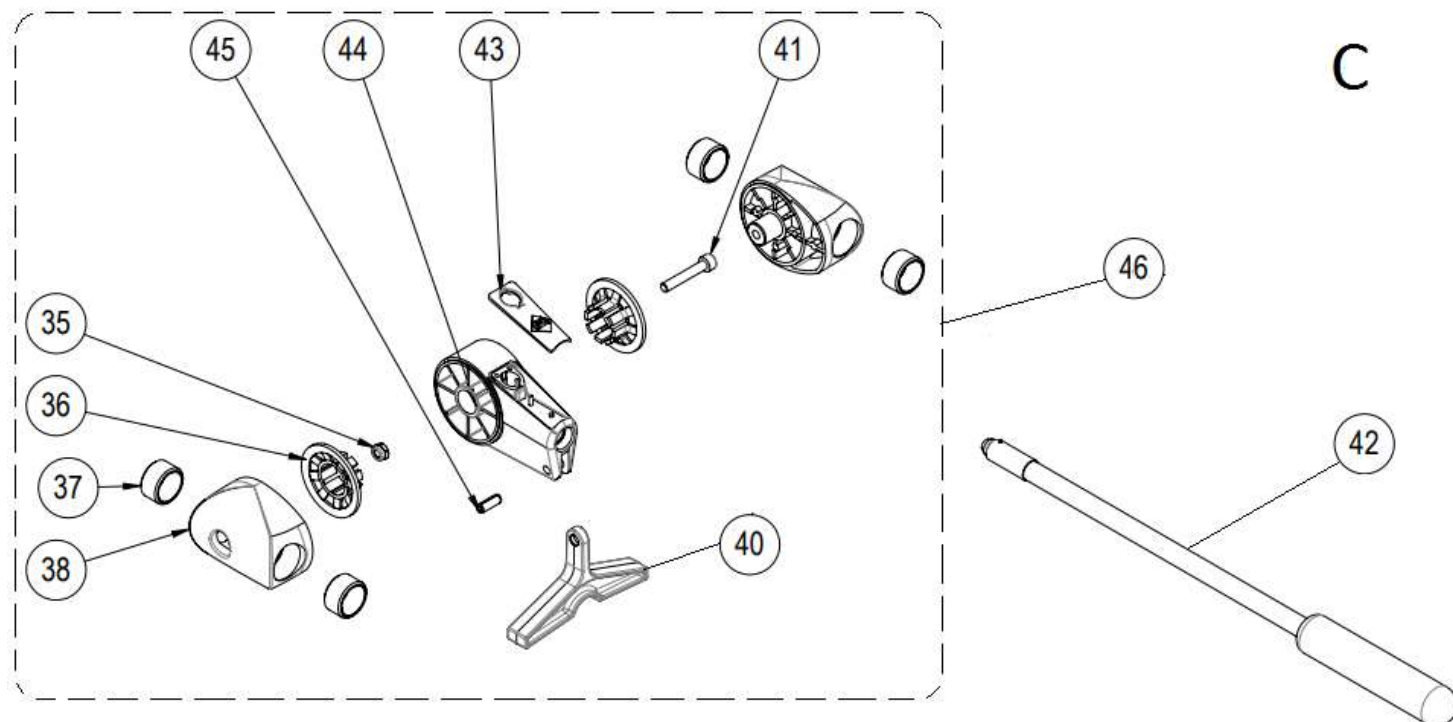
We reserve the right to introduce any technical modification without previous notice



| Part-list | | ES | | EN | | Prod. | |
|-----------|-------|----|--------------------------------------|-----------------------------------|--|-------|--|
| 1 | 40045 | 2 | TUERCA DIN 985 M5 CL8 ZN AUTOBLOC | HEX LOCK NUT DIN 985 M5 CL8 ZP | | | |
| 3 | 13438 | 1 | BASE SPEED-62 ARENADA V3 | SANDY BASE SPEED-62 V3 | | | |
| 4 | 17718 | 4 | CONTERA GOMA ESF.Ø 15X17 | RUBBER BUMPER Ø15X17 | | | |
| 5 | 13442 | 1 | KIT GOMA MIXTA SPEED-62 DER.Y IZQ.V2 | MIXED RUBBER SPEED-62 V2 ASSEMBLY | | | |
| 6 | 13171 | 2 | PATA DE APOYO SPEED-62 | SUPPORT ARM SPEED-62 | | | |
| 7 | 14210 | 2 | TORN ISO 7380 M5X25 6.8 ZN | SCREW ISO 7380 M5X25 6.8 ZP | | | |
| 8 | 15132 | 1 | TUERCA DIN 934 M6 CL8 ZN | HEX NUT DIN 934 M6 CL8 ZP | | | |
| 9 | 13255 | 1 | POMO M6 ESTANDAR ROJO V2 | RED STANDARD M6 KNOB V2 | | | |
| 10 | 57485 | 1 | TAPON POMO M6 ROJO | RED COVER KNOB M6 | | | |
| 11 | 50003 | 1 | TORN DIN 933 M6X40 6.8 ZN | SCREW DIN 933 M6X40 6.8 ZP | | | |
| 12 | 45038 | 1 | ARAND DIN 9021 A6,4 ZN | WASHER DIN 9021 A6,4 ZP | | | |
| 13 | 13440 | 1 | TOPE LATERAL SPEED V2 | LATERAL STOP SPEED V2 | | | |
| 14 | 13436 | 1 | SUPLEMENTO 45º V2 | 45º SUPPLEMENT V2 | | | |
| 15 | 13828 | 2 | C.J.PATA DE APOYO SPEED-62 | SUPPORT ARM SET SPEED-62 | | | |
| 16 | 45439 | 1 | C.J.POMO M6X35 ROJO V2 | RED KNOB SET M6X35 V2 | | | |



| Part-list | ES | EN | Prod. |
|-----------|---------|----------------------------|------------------------------|
| 20 | 13175 2 | TORN DIN 912 M10X30 8.8 ZN | SCREW DIN 912 M10X30 8.8 ZP |
| 21 | 13172 2 | TOPE CORREDERA Ø17X22X12 | CARRIER TOP 17X22X12 |
| 22 | 13163 2 | GUIA Ø 17 l=735 CROMADA | CHROMING GUIDE Ø 17 L=735 |
| 23 | 50150 2 | TUERCA DIN 934 M10 CL8 ZN | HEX NUT DIN 934 M10 CL8 ZP |
| 24 | 13162 2 | SOPORTE GUIAS SPEED-62 | GUIDE SUPPORT SPEED-62/72/92 |
| 25 | 56017 2 | ARAND DIN 125 A10,5 ZN | WASHER DIN 125 A10,5 ZP |
| 26 | 13173 2 | TOPE CORREDERA Ø17X22X6 | CARRIER TOP 17X22X6 |
| 27 | 15136 2 | TACO GOMA Ø 6X6 | RUBBER STOPPER 6X6 |



| Part-list | ES | EN | Prod. |
|------------|-----------------------------------|------------------------------------|-------|
| 35 40045 1 | TUERCA DIN 985 M5 CL8 ZN AUTOBLOC | HEX LOCK NUT DIN 985 M5 CL8 ZP | |
| 36 13155 2 | EMBOLO FRENO SPEED | BRAKE STAR/SPEED | |
| 37 15140 4 | CASQ 17X21X12 SINTER. | BUSHING 17X21X12 | |
| 38 13214 2 | CORREDERA SPEED-62 ARENADO | SLIDER SPEED-62 SANDY | |
| 40 13146 1 | PISADOR SPEED-42/62 | BREAKING FEET SPEED-42/62 | |
| 41 13176 1 | TORN DIN 912 M5X30 8.8 ZN | SCREW DIN 912 M5X30 8.8 ZP | |
| 42 11290 1 | CJ.MANGO RAPID-STAR/R | CJ.RED HANDLE | |
| 43 12350 1 | TAPA PORTAHERRAM.R V2 | TOOLHOLDER COVER/R V2 | |
| 44 12230 1 | PORTAHERRAM.STAR | TOOLHOLDER | |
| 45 12293 1 | PASADOR DIN 1481 Ø 5X14 | ELASTIC SPINDLE DIN 1481 5X14 | |
| 46 13802 1 | CJ.CORRED.PORTAHERRAM.SPEED-62 V2 | CARRIER+TOOLHOLDER SET SPEED-62 V2 | |